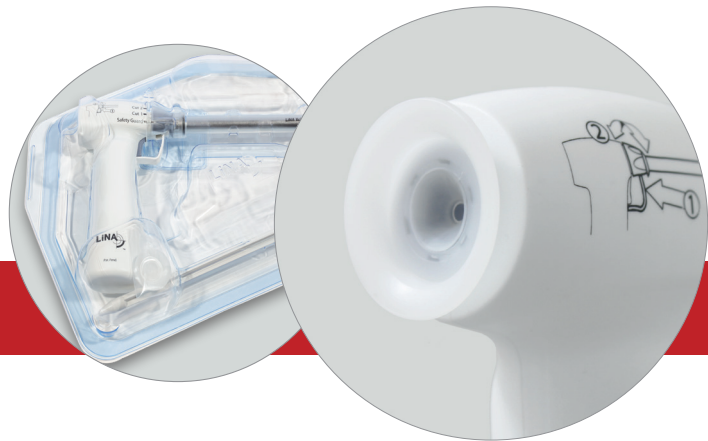


LiNA Xcise™

Cordless Laparoscopic Morcellator



Cut the Cord



Innovation in Gynecology

LiNA Xcise™

Cordless Laparoscopic Morcellator



Simplicity. Instant-use fully disposable design.

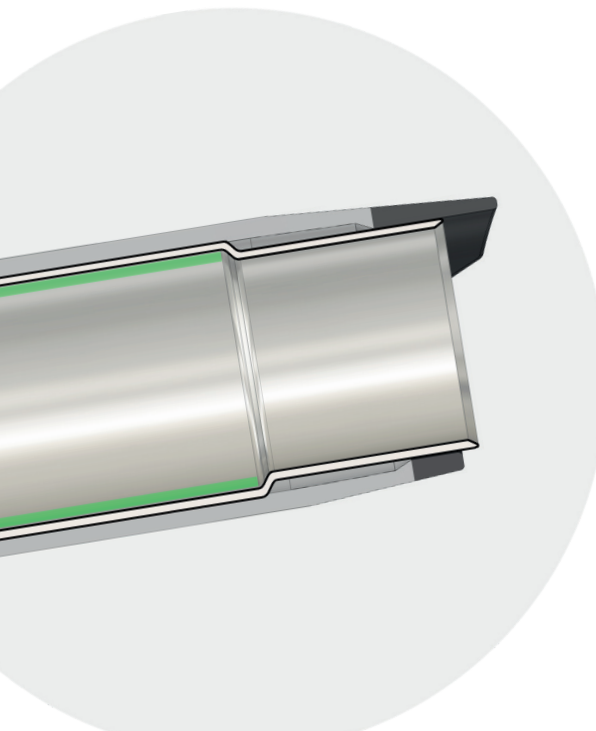
No assembly required. No drive box or cables.

Lightweight cordless design incorporates motor and battery in one device. Open the package, insert the obturator, and you are ready to start morcellating.



Safety. Control your blade exposure.

LiNA Xcise™ features 3 blade positions to choose from to aid in safety and control during tissue morcellation.



Speed. Flared Tube Technology™

Cutting tube diameter increases as tissue is pulled through, creating a gap (highlighted in green at left) which reduces drag between the blade and the tissue. Drag is reduced, facilitating longer strips with less tissue breakage.

High torque ~1000 RPM motor to power through tissue.

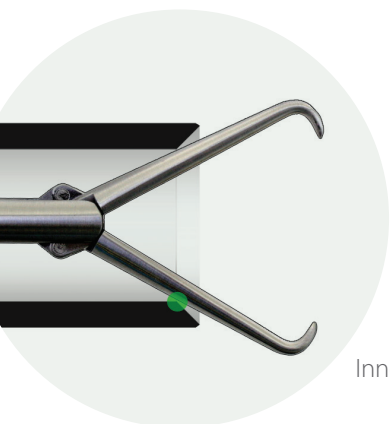


Snap-on
5mm Reducer Cap

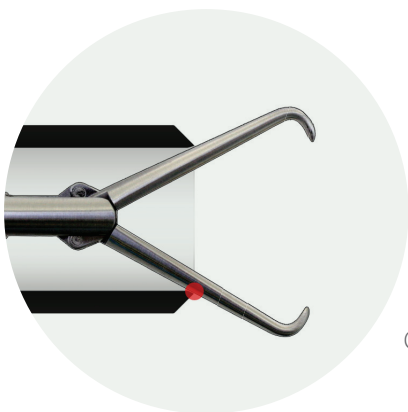


LiNA Xcise™

Cordless Laparoscopic Morcellator



Inner Bevel - LiNA Xcise™



Outer Bevel

Sharpness. 300 series stainless steel blade features a larger inner bevel to prevent dulling from inadvertent contact with the tenaculum.

Indications for use:

Indicated for cutting, coring, and extracting tissue in operative laparoscopy, including gynecologic procedures such as hysterectomy and myomectomy. For more information please refer to the Instructions for use.

Ordering information:

LiNA Xcise™ **CE**
0459

Product code	Description	UOM
MOR-1515-1-I	LiNA Xcise™ – Laparoscopic Morcellator 15mm, battery powered morcellator system with obturator. Sterile, single use.	Box of 12 ea (individually packed)
MOR-1515-6-I	LiNA Xcise™ – Laparoscopic Morcellator 15mm, battery powered morcellator system with obturator. Sterile, single use.	Box of 6 ea

©2020 LiNA Medical ApS. All rights reserved.

LiNA is a registered trademark of LiNA Medical in EU, US and CN.

Distributor:

Kebomed France

● 300 rue du Noir Debout,
Parc d'activité de Croisette,
59242 Cappelle en Pévèle,
France

Tel : 04 78 59 54 93
Fax : 04 78 59 89 78
info@kebomed.fr
www.kebomed.fr

● Device class: IIb
Name and number of the notified body:
LNE / G-MED # 0459

Document created for the Healthcare Professionals.

Before use, refer to the instructions attached to medical device.

Manufacturer:

LiNA Medical ApS

● Formervangen 5
DK-2600 Glostrup
Denmark

● Tel.: +45 43 29 66 66
Fax: +45 43 29 66 99
info@lina-medical.com

● www.lina-medical.com
CVR: 10054974

Quality Management System
EN ISO13485:2016

